

Water Trends in Eugene, Oregon



BOB DENOUDEN
SENIOR BUSINESS ANALYST
EUGENE WATER & ELECTRIC BOARD



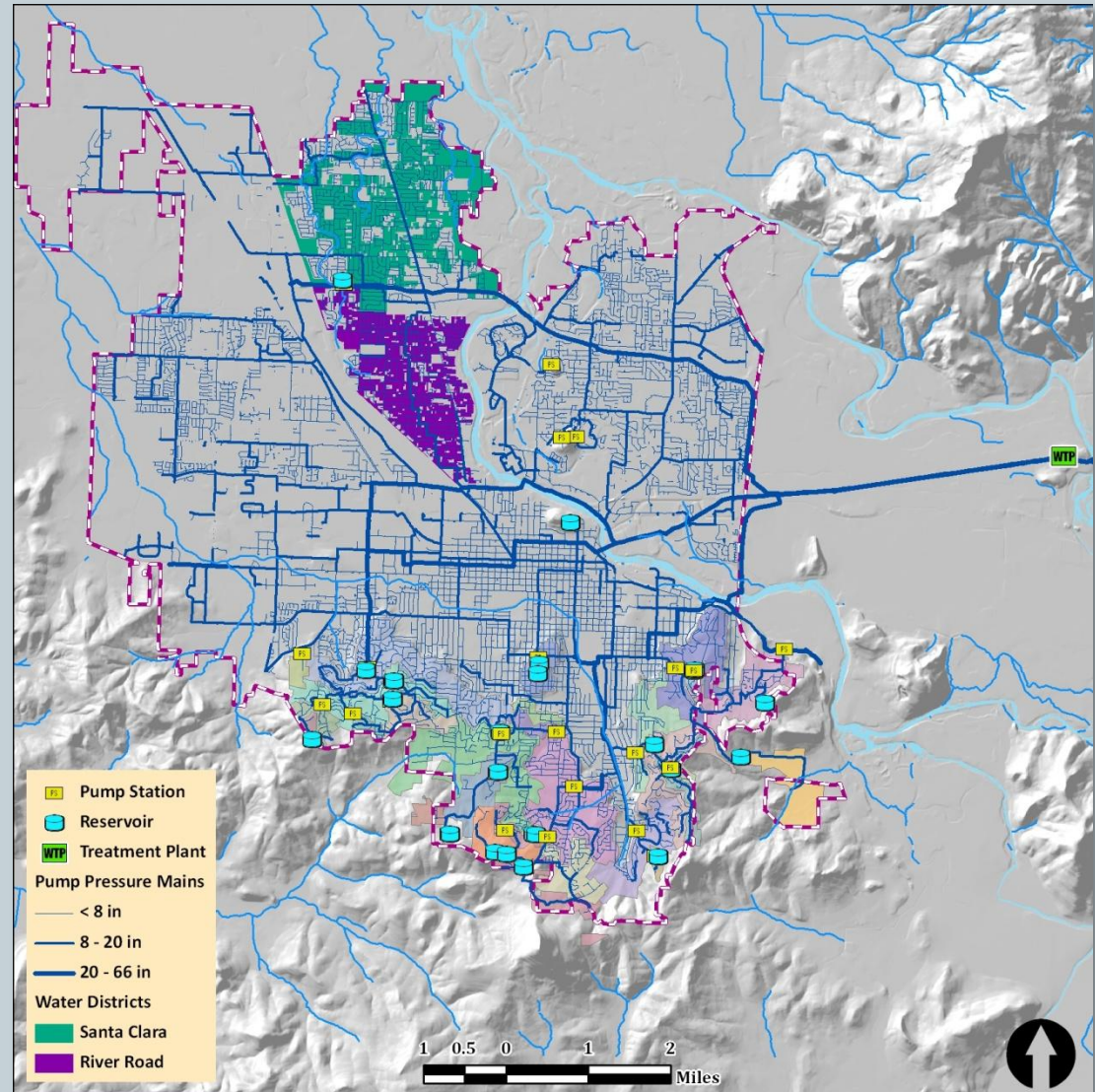
Background

- **me:**

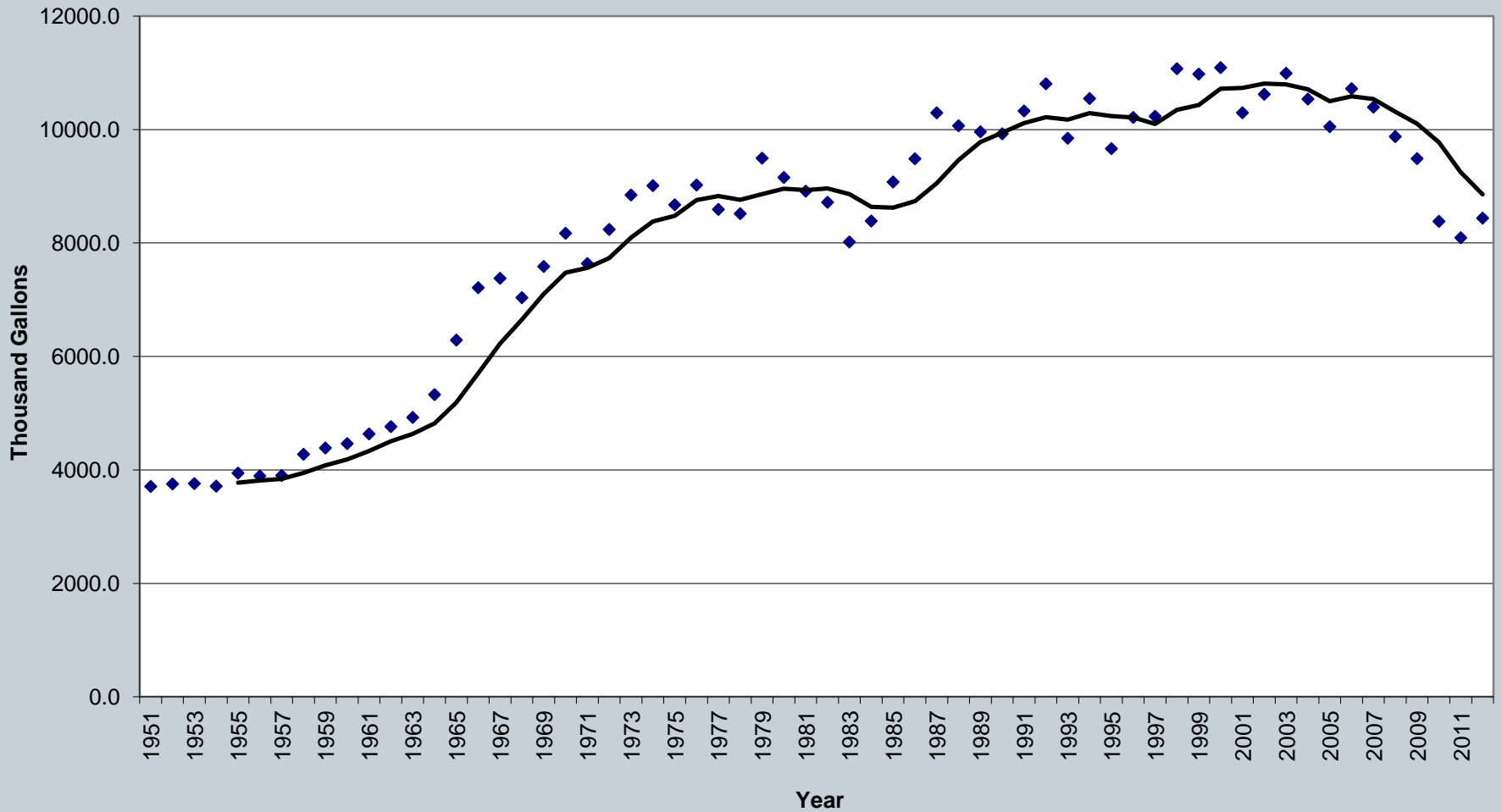
- BS Math, MS Geography
- Transportation planning
- GIS analyst
- Regional planning, forecasting, and modeling
- 3 years at EWEB

- **EWEB**

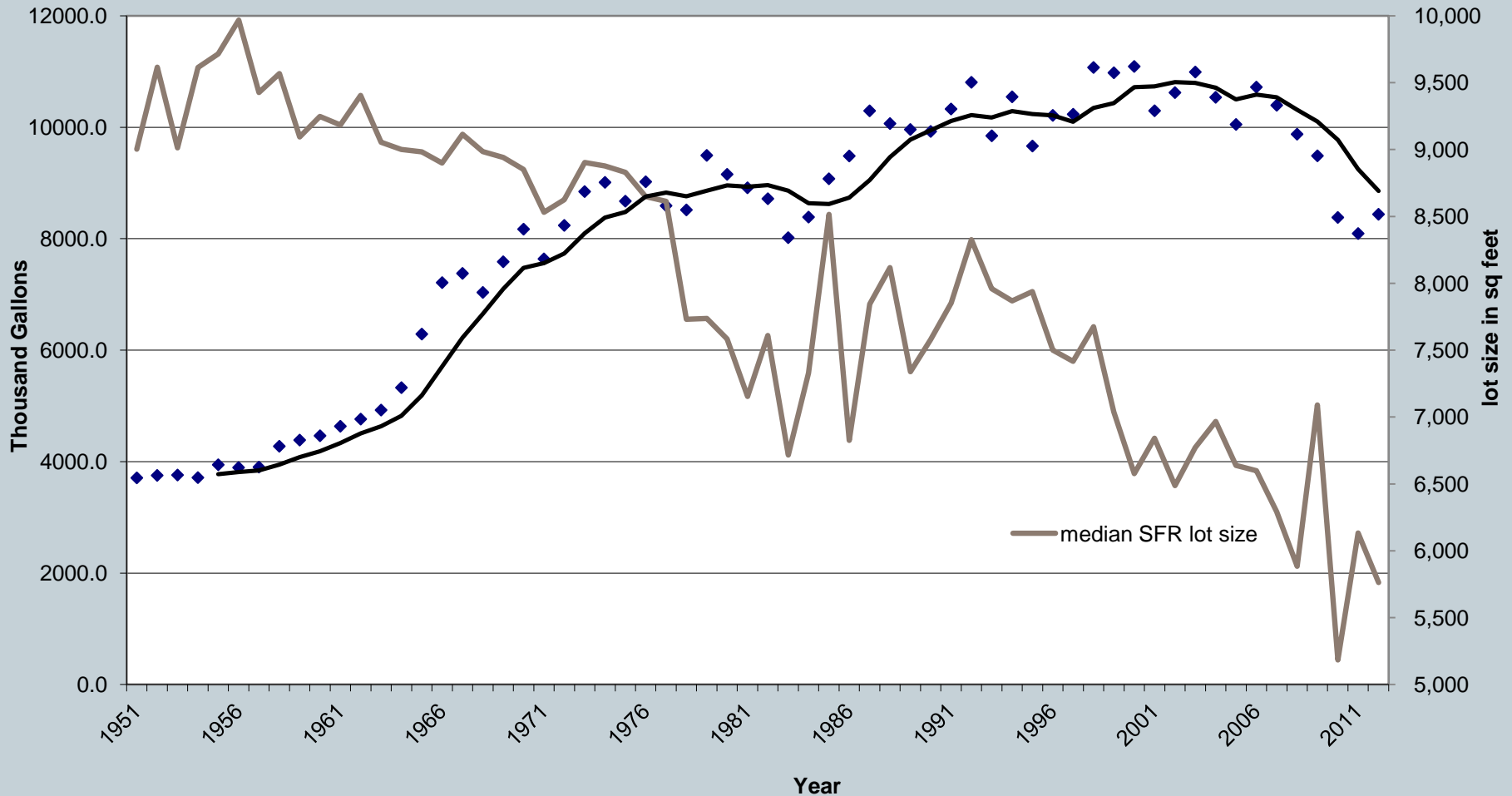
- Water & Electric utility
- ~60,000 water customers
- 180,000 population
- \$38M budget (water)



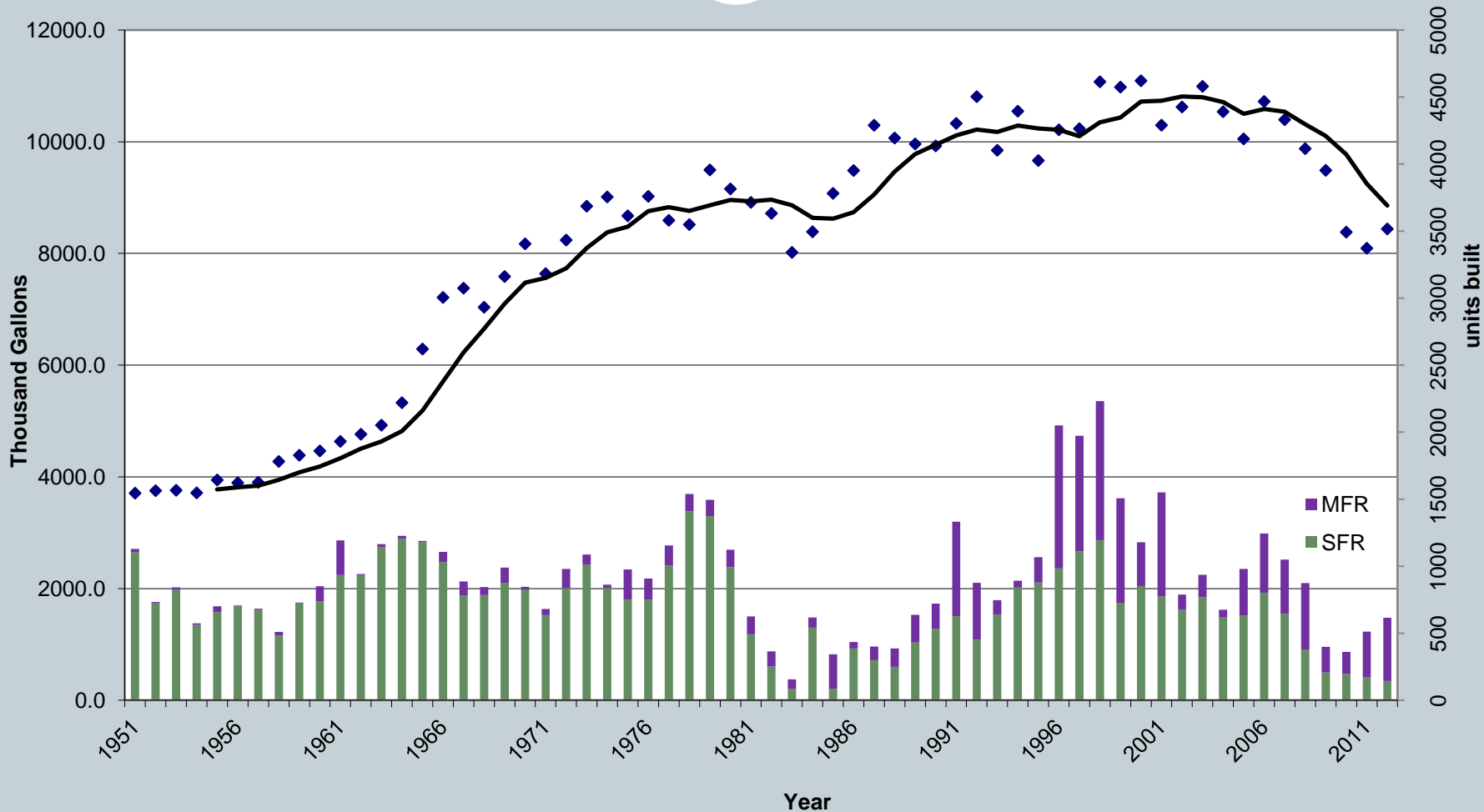
Annual Water Production



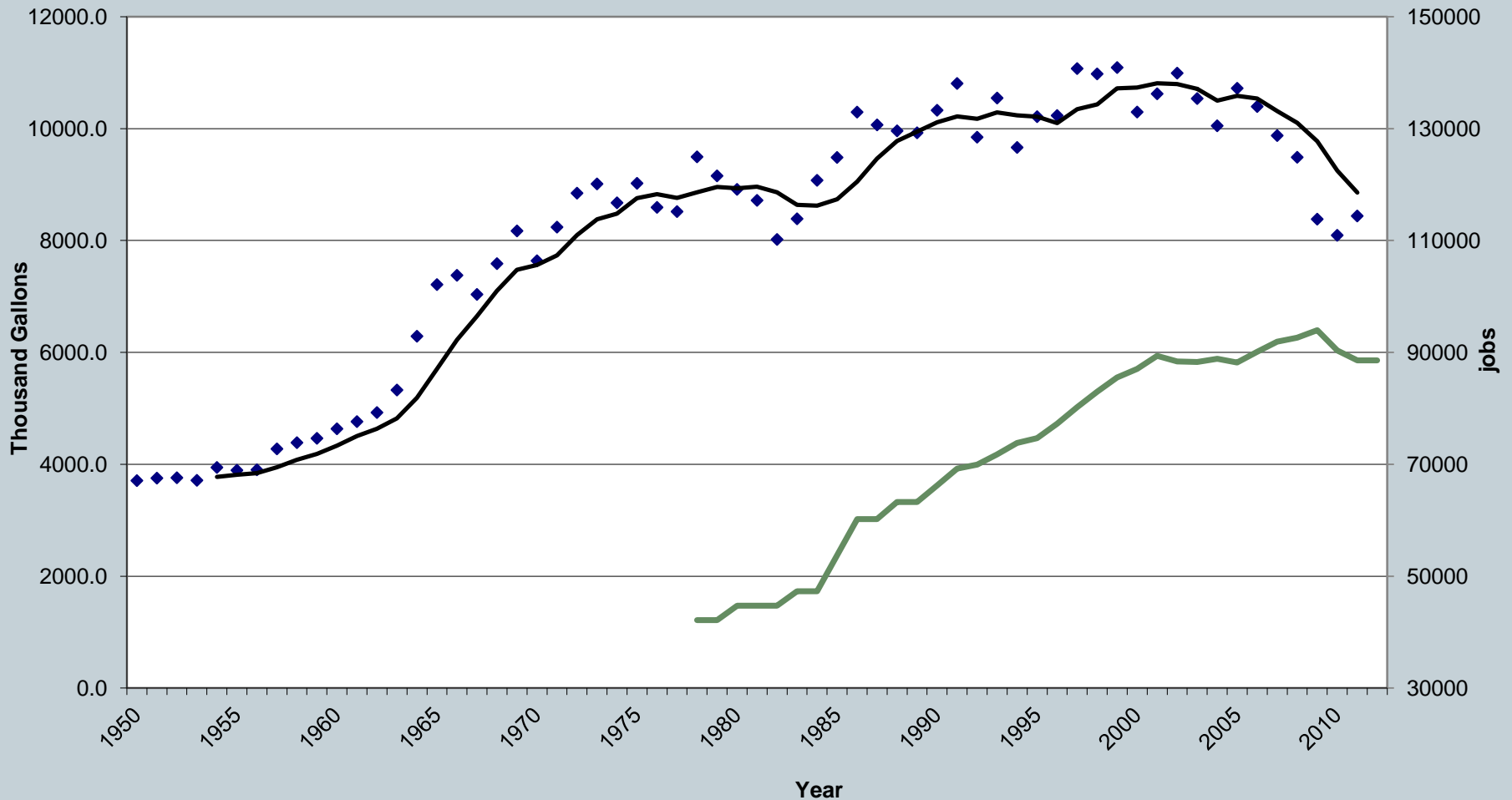
Annual Water Production vs. SFR median lot size



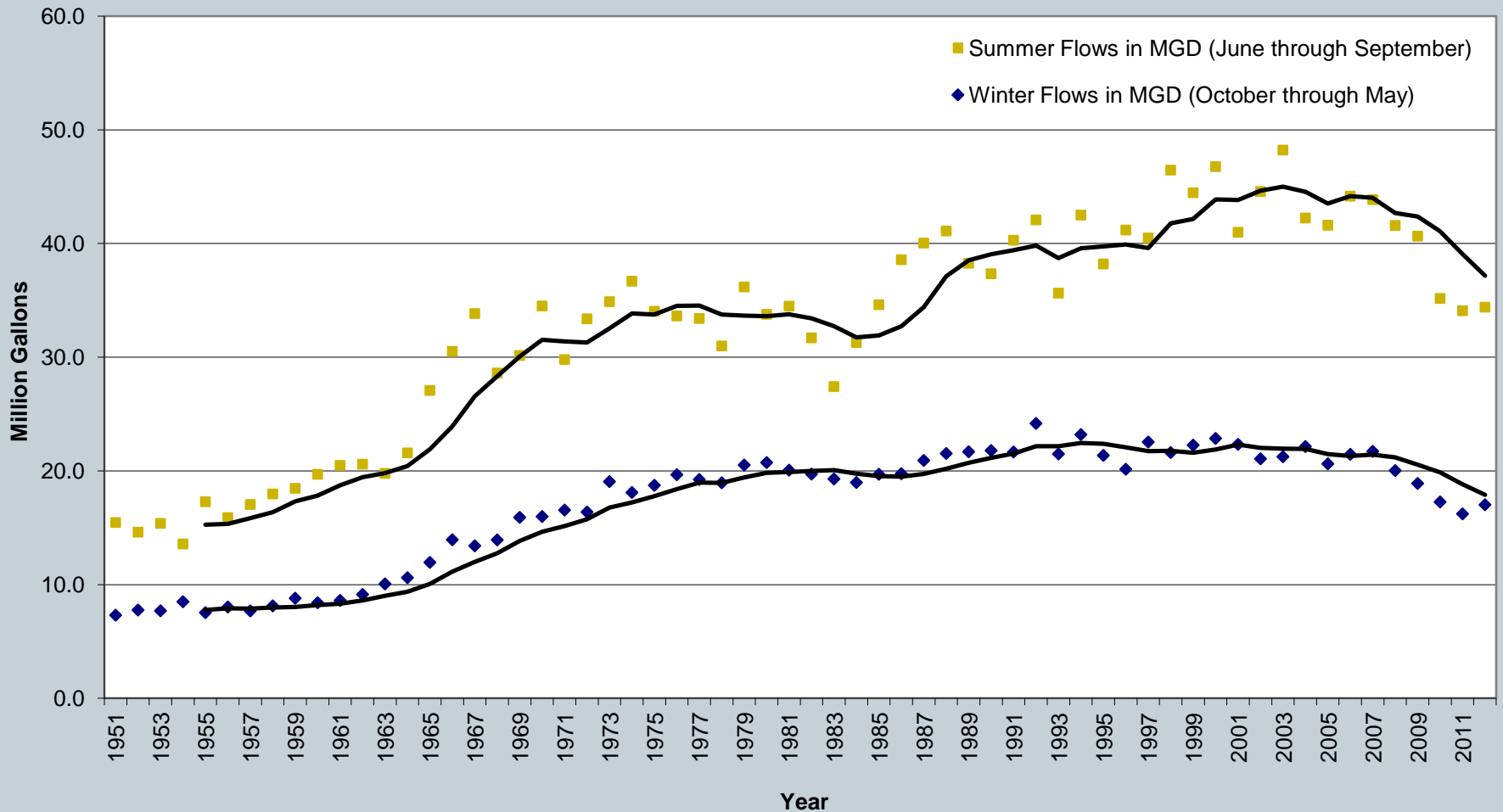
Annual Water Production vs. residential units built



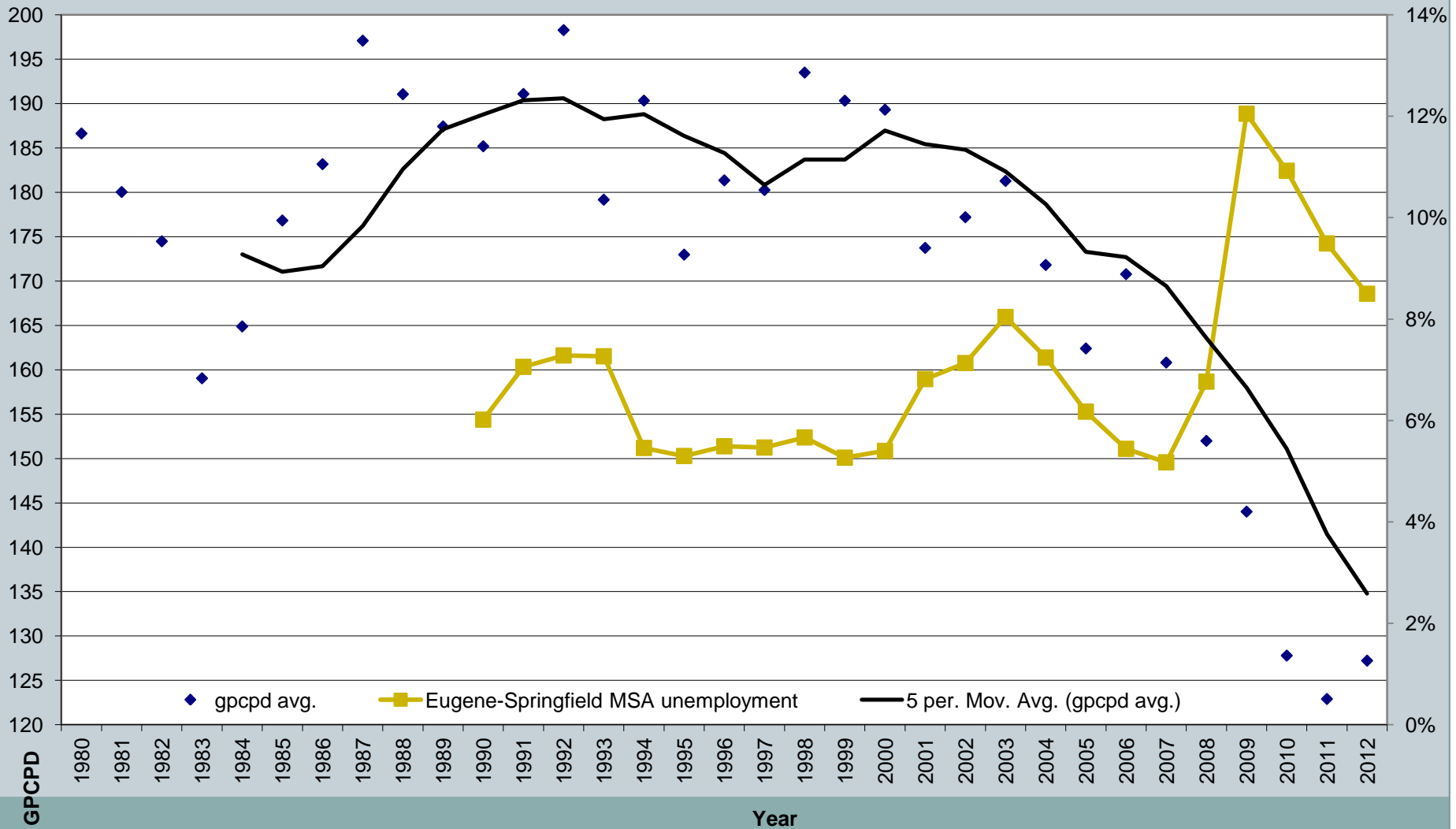
Annual Water Production vs. number of jobs in service area



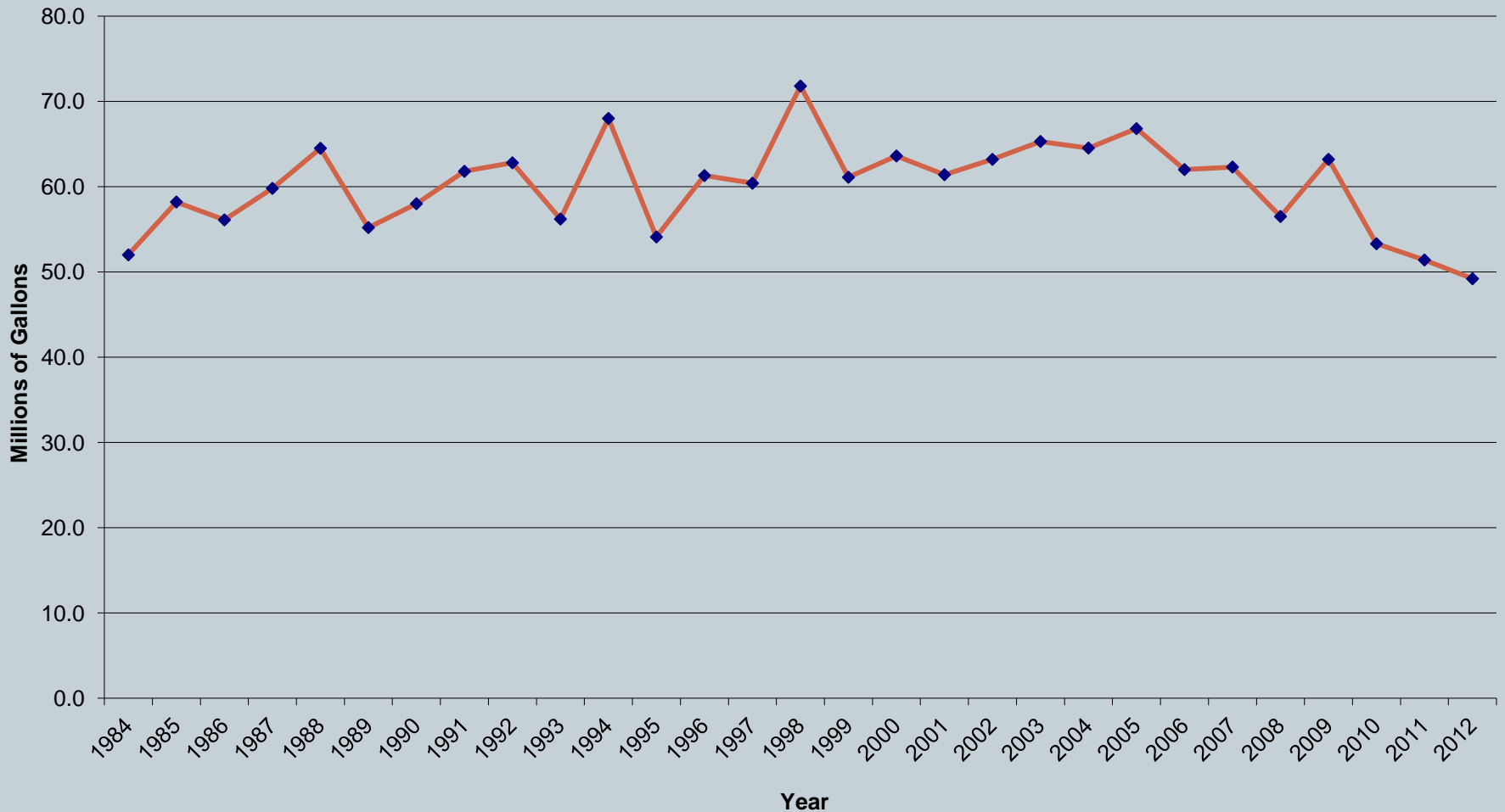
Summer vs winter average daily



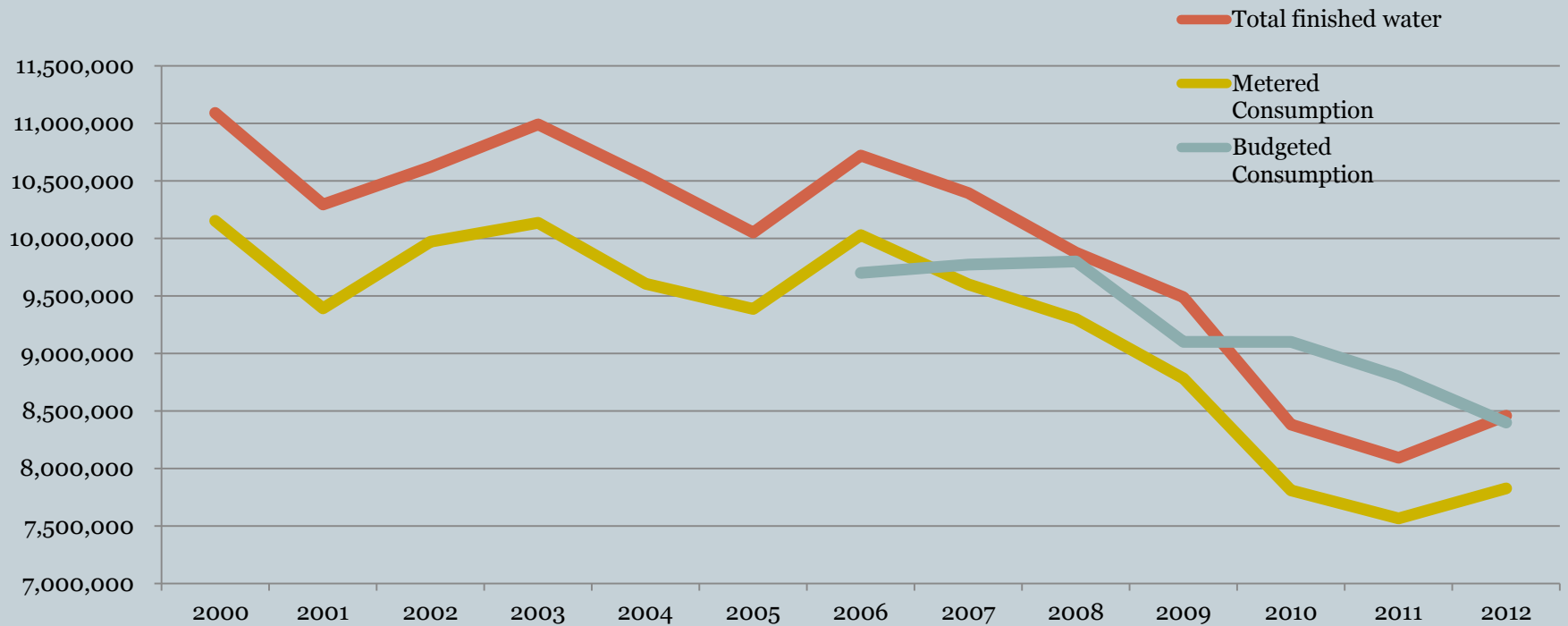
Estimated daily per capita gallons (vs. unemployment)



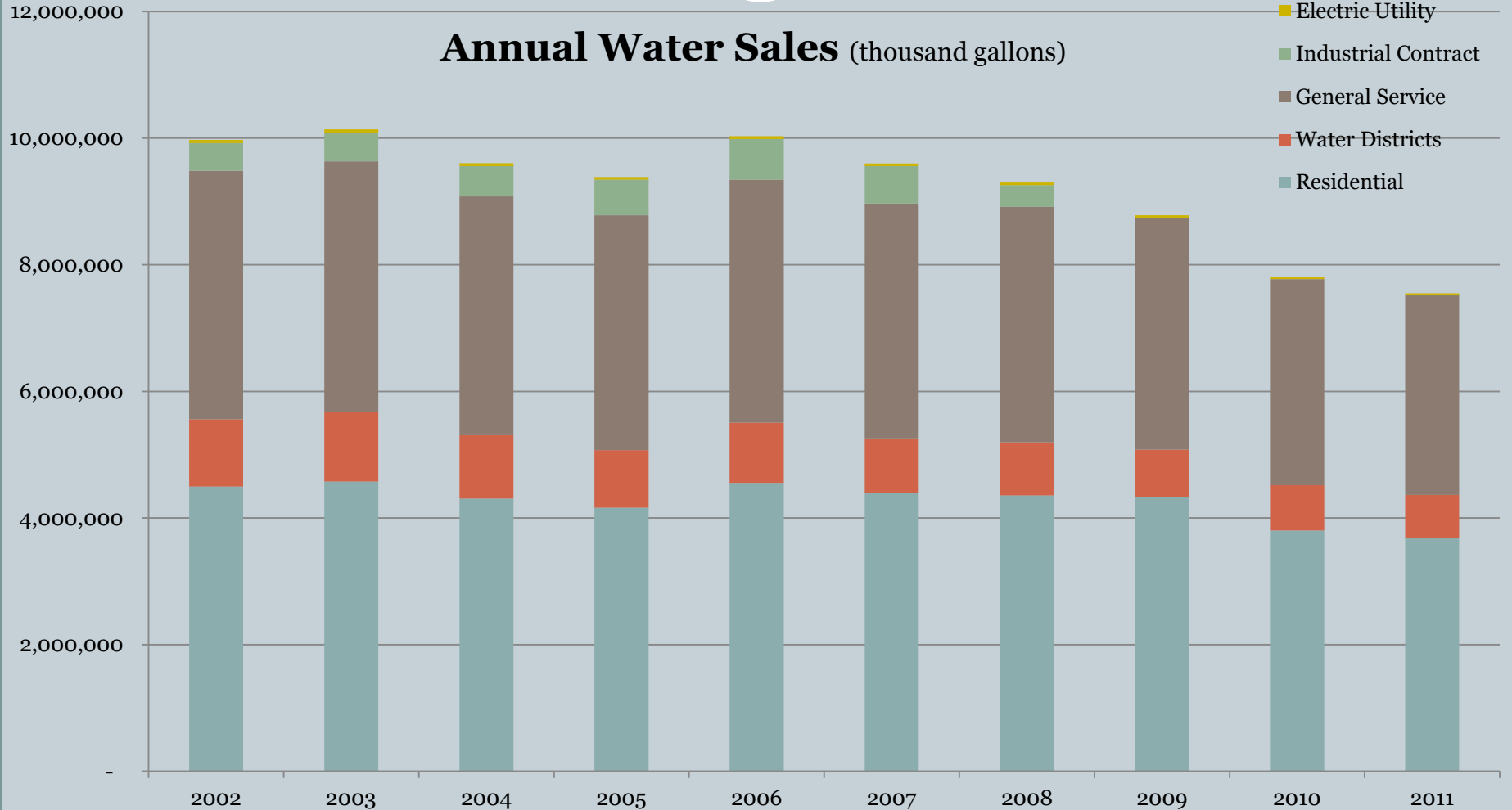
Maximum Day Demands (1984 to 2012)



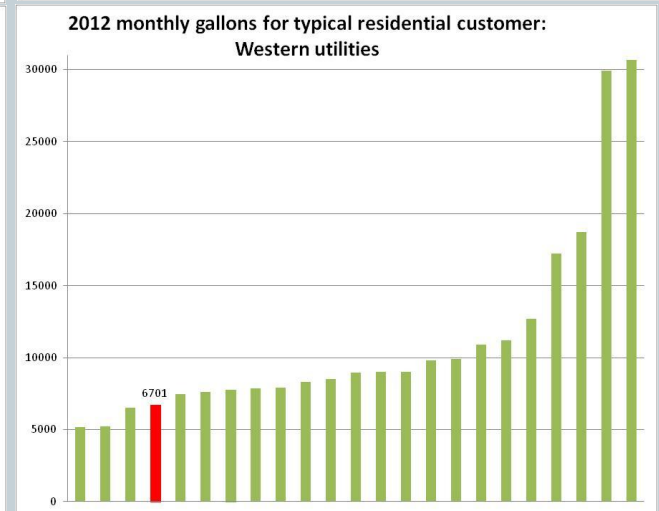
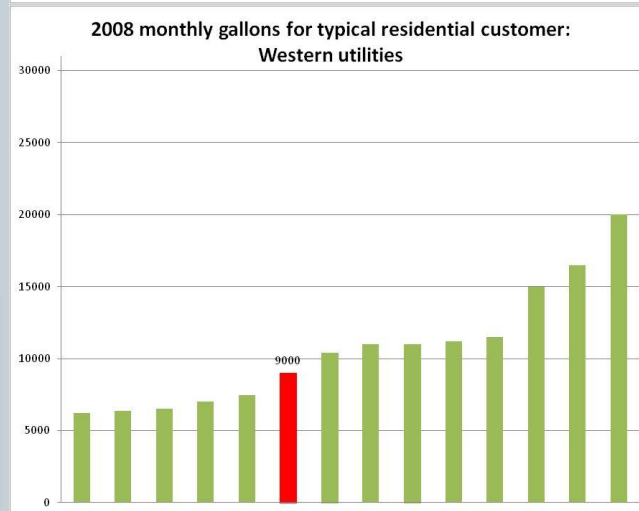
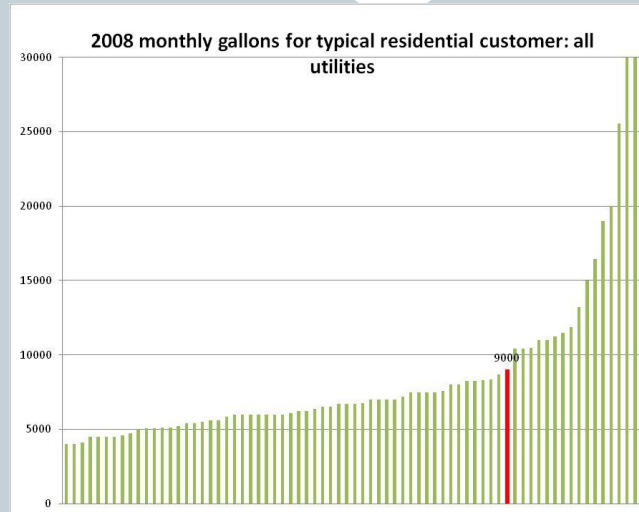
Historic metered vs. budgeted consumption



Water Sales by class



AMWA survey: typical residential consumption



median	2008	2012	percent reduction
all	6,716	6,233	7%
Western	10,700	8,976	16%
EWEB	9,000	6,701	26%

2004 Water System Master Plan Forecasts vs. Actual

